

# From idea to end user faster and with better quality

Kristian Karl, Spotify



# Engineering Manager at Spotify



 @kristiankarl



## GraphWalker

- Overview
- Get started
- MBT How to
- Supported features
- How to build it
- Change Log
- Support
- General workflow
- Documentation
- Command Line Interface
- REST API
- Websocket API
- Maven plugins
- File formats
- Examples
- Download
- License

## Getting started overview

Summary: GraphWalker is an open source Model-based testing tool for test automation. It's designed to make it easy to design your tests using graphs.

## GraphWalker survey

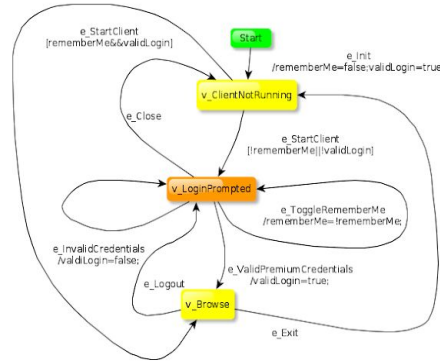
We created a questionnaire which we would love our users to fill in. The purpose is to help us understand how GraphWalker is used.

Please go to [GraphWalker Survey](#)

## Overview

GraphWalker is an [Model-Based testing](#) tool. It reads models in the form of [directed graphs](#), and generate [test] paths from these graphs.

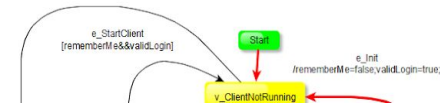
A model can look like the one to the next. The model is collection of arrows and nodes and together they create a graph.



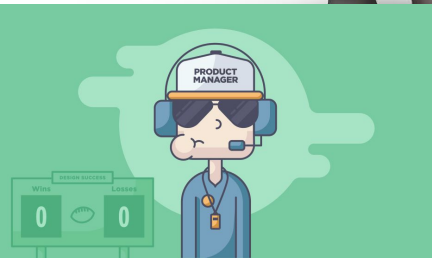
- An arrow represents an action.
- A node represents a verification.

## What GraphWalker does

Given a model and a generator rule, GraphWalker by mathematical algorithms generates a path which corresponds to your test idea. Next image illustrate such result.



# graphwalker.org



# Psychological safety





## Gitte Klitgaard

@NativeWired

Able Coach, curious, believer in Altruistic Reciprocity, hippie, friend, hugger, learner & more :) Cis, she/hers/her

📍 Risskov, Denmark

📅 Joined September 2011



### Gitte Klitgaard

@NativeWired

Follow

I love working with psychological safety. Creating a space for people to talk about things, contemplate, improve and learn. It is draining and rewarding at the same time.

10:57 AM - 12 Apr 2018

16 Retweets 39 Likes



💬 5 🔄 16 ❤️ 39 ✉️ 📧



Tweet your reply



**Gitte Klitgaard** @NativeWired · 12 Apr 2018

I keep learning about people and keep being amazed about the ideas people come up with to have that safe space for themselves and others. It is a privilege to help people open the gate to their ideas

💬 🔄 1 ❤️ 3 ✉️ 📧



**Gitte Klitgaard** @NativeWired · 12 Apr 2018

The more I work with it, the more I see just how important feeling safe is. Important to the work we do and the humans that we are

💬 🔄 3 ❤️ 4 ✉️ 📧



**Gitte Klitgaard** @NativeWired · 12 Apr 2018

Why draining you may ask?  
Holding the space, opening my heart, caring gives and drains. Facilitating intense sessions, reading people to see what they need to speak up - it all costs energy. And it is worth it <3

💬 3 🔄 3 ❤️ 12 ✉️ 📧



**Karen Greaves** @karen\_greaves · 12 Apr 2018

Replying to @NativeWired

I am amazed how much I have to reassure my team: I don't care what time they leave, I want them to invest in learning, they should take leave when they are sick, working from home is fine.

💬 1 🔄 ❤️ 4 ✉️ 📧



**Gitte Klitgaard** @NativeWired · 12 Apr 2018

It is amazing.. And just because they are not used to it..

💬 1 🔄 ❤️ ✉️ 📧



**Karen Greaves** @karen\_greaves · 12 Apr 2018

Mostly it's because they have been told no in the past.

💬 1 🔄 ❤️ ✉️ 📧



**Gitte Klitgaard** @NativeWired · 12 Apr 2018

# Planning: understanding the whys



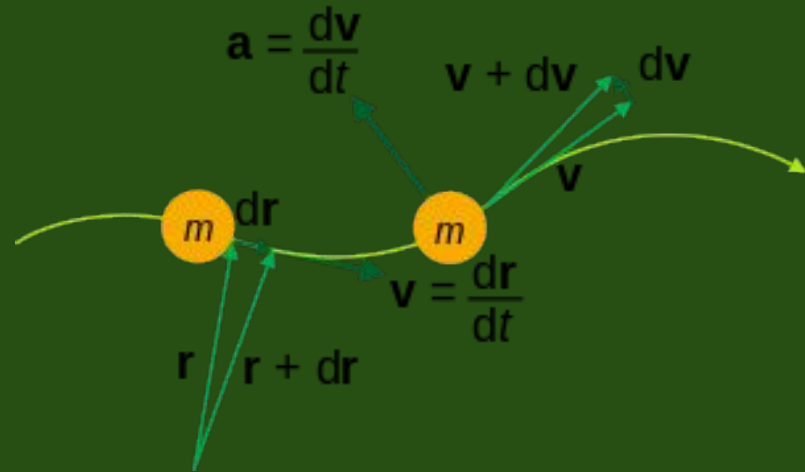


# Realistic planning





# Know your velocity



# Capacity planning



# Planned vs unplanned

**planned** [see definition of planned](#)

*adj* projected

Synonyms for planned

*adj* projected

prepared

programmed

on the docket

outlined

in the making

prospective

[www.thesaurus.com](http://www.thesaurus.com)

**unplanned**  [see definition of unplanned](#)

*adj* not planned

Synonyms for unplanned

*adj* not planned

accidental

random

unintended

aleatory

haphazard

spontaneous

unintentional

fortuitous

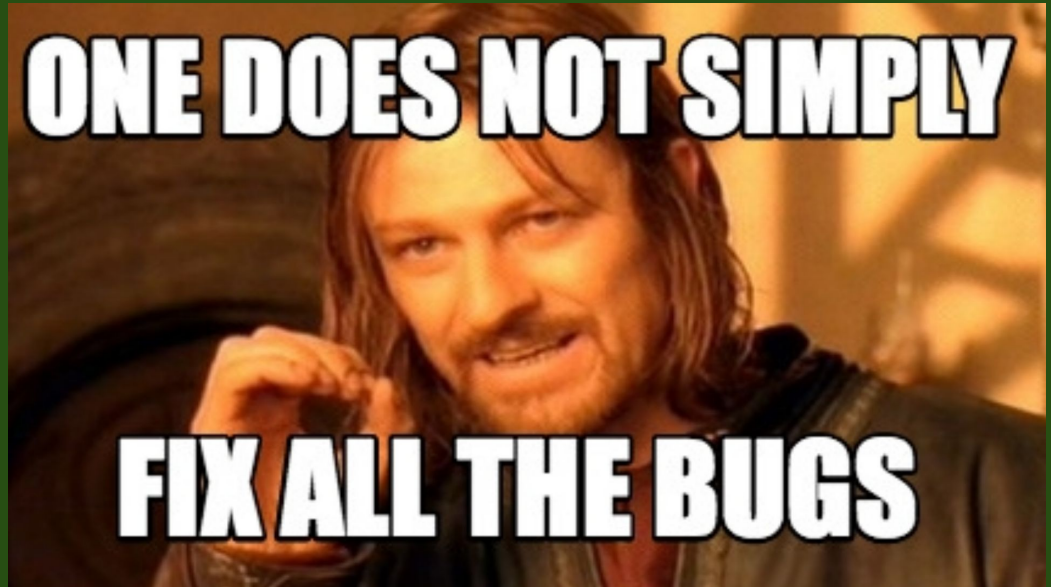
impromptu

unexpected

adventitious

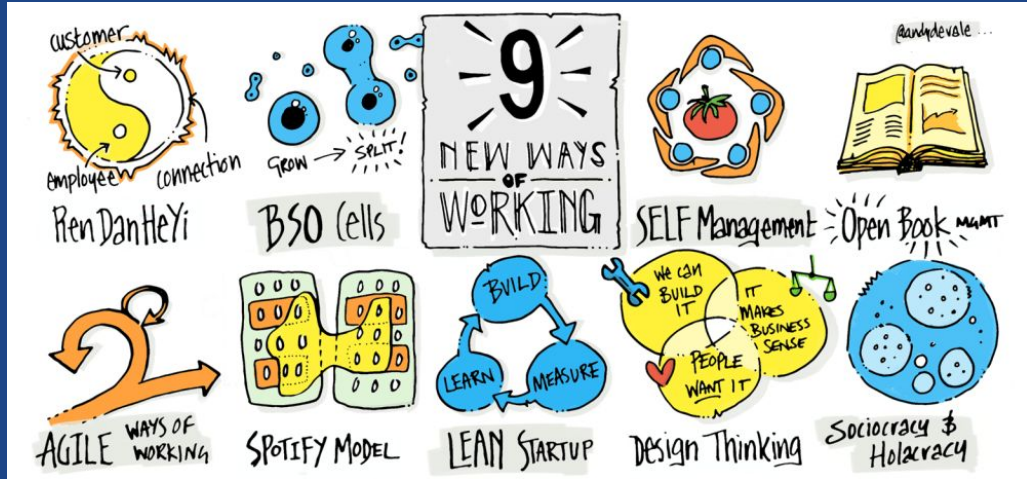
undesigned

# Zero bug policy



**Add 20%**





# Ways of working









# The silos within



# Swarming and spiking



# The T-shaped developer



**Always  
releasable  
master**







# Testing and checking

Business

Check for  
the  
expected

- Functional testing
- BDD
- Specification by example

- unit tests
- Component tests

- Exploratory testing
- Scenarios
- Usability testing

- Performance
- Security

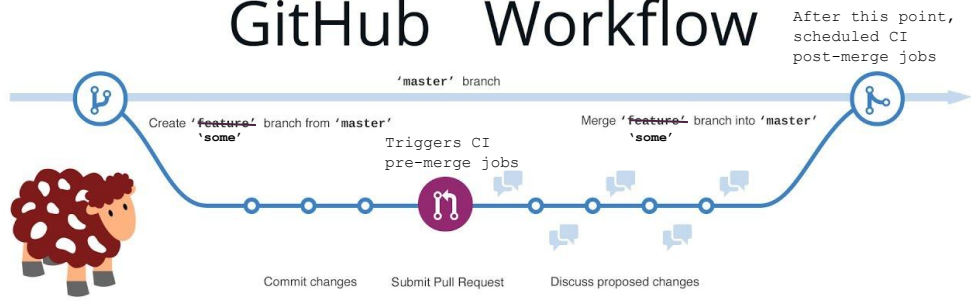
Find  
the  
unexpected

Technology





## GitHub Workflow

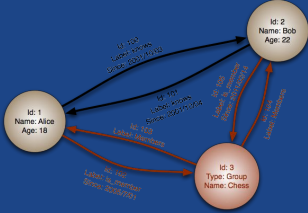


# Continuous Integration



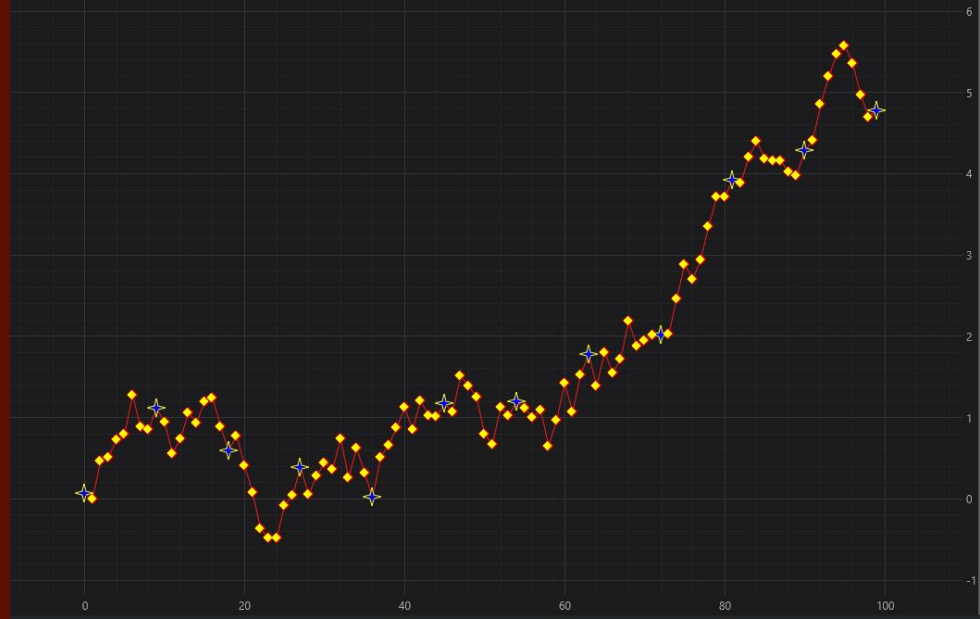
**Automation in  
CI is designed  
to verify**

- Property-based
- Model-based

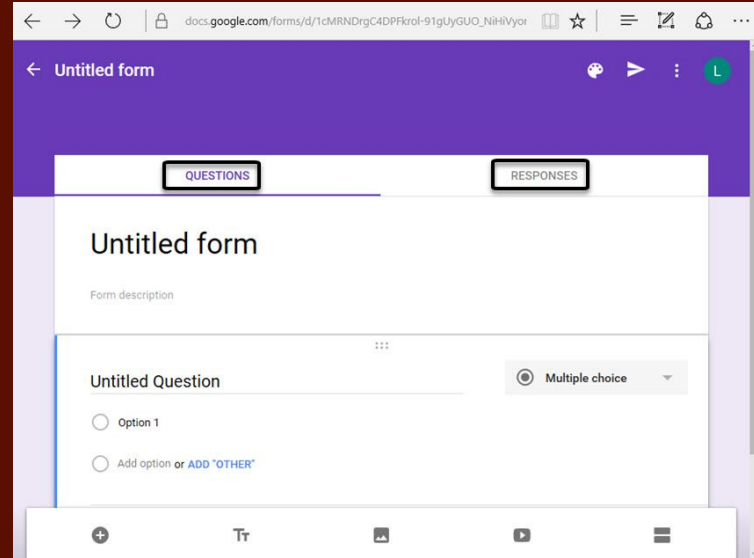


# Automation in post-merge is designed to find bugs

# Testing in production



# Getting feedback from users



The image shows a browser window displaying a Google Forms page. The address bar shows the URL: docs.google.com/forms/d/1dMRNDrgC4DPfkrol-91gUyGUO\_NiHvYor. The page title is "Untitled form". The interface has a purple header with navigation icons. Below the header, there are two tabs: "QUESTIONS" and "RESPONSES", both highlighted with black boxes. The main content area shows the form title "Untitled form" and a "Form description" field. Below that is a question titled "Untitled Question" with a "Multiple choice" dropdown menu. The question has two options: "Option 1" and "Add option or ADD 'OTHER'". The bottom of the screen shows a toolbar with icons for adding questions, text, images, videos, and tables.

# Maintenance takes precedence







# The outcome?

- Fewer incidents
- More planned work finished
- On-time deliveries